

# MasterConcept, Version 12

---

## Table of Contents

<b>1</b>	<b>Introduction .....</b>	<b>5</b>
1.1	How to use this document.....	5
1.2	Released Versions.....	5
<b>2</b>	<b>Where to find information.....</b>	<b>6</b>
2.1	Information Files .....	6
2.2	Online Resources .....	6
2.2.1	World Wide Web.....	6
<b>3</b>	<b>Contacting Ides .....</b>	<b>6</b>
3.1	Support .....	6
<b>4</b>	<b>Equipment requirements .....</b>	<b>6</b>
4.1	Hardware requirements .....	7
4.1.1	Server recommendation.....	7
4.1.2	Used disk space .....	7
4.1.3	Client recommendation .....	8
4.1.4	Used disk space .....	8
4.2	Software Requirements .....	9
4.2.1	Operating System .....	9
4.2.2	Server .....	9
4.2.3	Application Server.....	9
4.2.4	Client .....	10
<b>5</b>	<b>New Functionality .....</b>	<b>10</b>
5.1	Key Features .....	10

5.2	Smaller Features .....	13
<b>6</b>	<b>Updated Functionality .....</b>	<b>15</b>
<b>7</b>	<b>Release Fix 1 (12.0.1) .....</b>	<b>18</b>
7.1	Explorer .....	18
7.2	Design.....	19
7.3	Configurator .....	20
<b>8</b>	<b>Release Service Release 1 .....</b>	<b>21</b>
8.1	New Functionality .....	21
8.1.1	Explorer .....	21
8.1.2	Design.....	24
8.1.3	MasterPortal .....	24
8.2	Updated Functionality .....	25
8.2.1	Explorer .....	25
8.2.2	Design.....	29
<b>9</b>	<b>Release Fix 1 (12.1.1) .....</b>	<b>30</b>
9.1	New Functionality .....	30
9.1.1	Important Changes .....	30
9.1.2	Explorer .....	30
9.1.3	Bug fixes .....	31
9.1.4	Design.....	31
9.1.5	MasterPortal .....	31
<b>10</b>	<b>Release Fix 2 (12.1.2) .....</b>	<b>32</b>
10.1.1	Important Changes .....	32
10.1.2	Explorer .....	32
10.1.3	MasterPortal .....	32

<b>11</b>	<b>Release Fix 3 (12.1.3)</b> .....	<b>33</b>
11.1	Explorer .....	33
11.2	Design.....	33
11.3	Masterportal.....	33
<b>12</b>	<b>Release Fix 4 (12.1.4)</b> .....	<b>35</b>
12.1	Explorer .....	35
12.2	Design.....	35
<b>13</b>	<b>Release Fix 5 (12.1.5)</b> .....	<b>36</b>
13.1	Explorer .....	36
13.2	Design.....	36
<b>14</b>	<b>Release Service Release 2</b> .....	<b>37</b>
14.1	New Functionality .....	37
14.2	Updated functionality .....	40
14.3	Installation.....	44
14.3.1	AutoUpdate.....	44
<b>15</b>	<b>Release Fix 1 (12.2.1)</b> .....	<b>44</b>
15.1	Explorer .....	44
15.2	Design.....	45
<b>16</b>	<b>Release Fix 2 (12.2.2)</b> .....	<b>45</b>
16.1	Explorer .....	45
16.2	Design.....	46
<b>17</b>	<b>Release Fix 3 (12.2.3)</b> .....	<b>48</b>
17.1	Explorer .....	48
17.2	CAD-Driver .....	48

<b>18</b>	<b>Release Service Release 3 .....</b>	<b>49</b>
<b>19</b>	<b>Release Fix 1 (12.3.1).....</b>	<b>49</b>
<b>20</b>	<b>Release Fix 2 (12.3.2).....</b>	<b>49</b>
<b>21</b>	<b>Release Fix 3 (12.3.3).....</b>	<b>49</b>
<b>22</b>	<b>Release Fix 4 (12.3.4).....</b>	<b>50</b>
<b>23</b>	<b>Release Fix 5 (12.3.5).....</b>	<b>50</b>
<b>24</b>	<b>Release Fix 6 (12.3.6).....</b>	<b>51</b>
<b>25</b>	<b>Database Package Version.....</b>	<b>52</b>
<b>26</b>	<b>Known Limitations .....</b>	<b>53</b>

# 1 Introduction

This readme contains information about Ides MasterConcept.

## 1.1 How to use this document

Please read this file thoroughly. If there are any questions please contact us (see [Contacting](#) ).

## 1.2 Released Versions

After installing, you should have the following versions on the different applications/modules.

Product	Version
<b>MasterExplorer</b>	12.3.6.12
<b>MasterDatabase</b>	12.3.6.12

## 2 Where to find information

### 2.1 Information Files

This file, readme.pdf, contains release notes for MasterConcept.

**Note:** If there are any late changes to functionality that was not included in the manuals there is a Late Changes.pdf on the CD that contains the changes.

### 2.2 Online Resources

#### 2.2.1 World Wide Web

Check Ides' website regularly for information. The support team will post technical papers for solutions and workarounds. Here you also can find information on updates and new versions.

[www.idesglobal.com](http://www.idesglobal.com)

## 3 Contacting Ides

### 3.1 Support

Contact the support team by phone: +46 (0)13 31 87 86 or email: [support@idesglobal.com](mailto:support@idesglobal.com)

## 4 Equipment requirements

The following chapters describe the hardware and software requirements for the MasterConcept products. Please note that this list is only a recommendation to reach a good performance for a system with one server and 5 clients having only MasterConcept Software installed.

Better hardware will improve the performance.

## 4.1 Hardware requirements

### 4.1.1 Server recommendation

Name	Comment
<b>Processor</b>	Intel® Xeon® Dual or Quad-processor
<b>Internal memory</b>	3 GB (x86) 4 GB (x64)
<b>CD-ROM drive</b>	40X Max CD-ROM drive
<b>Hard disk</b>	Type: SATAII or Ultra3 SCSI 10,000rpm hard drives
<b>Hard disk size (minimum)</b>	4,5 GB (system and temp files) 9 GB (database and files)
<b>Network</b>	100 MB/s or better

### 4.1.2 Used disk space

Name	Comment
<b>Oracle server Software</b>	4,5 GB
<b>Oracle data files</b>	500 MB
<b>eIMaster data files</b>	500 MB
<b>eIMaster Software, symbols</b>	320 MB

### 4.1.3 Client recommendation

Name	Comment
<b>Processor</b>	Intel I5
<b>Internal memory</b>	3 GB (32 bit) / 6 GB (64 bit)
<b>CD-ROM drive</b>	40X Max CD-ROM drive
<b>Hard disk</b>	SATA-3, 7,200 rpm
<b>Hard disk size</b>	120 GB
<b>Network</b>	100 Mbps
<b>Graphics</b>	1,280 x 1,024 true color video display adapter 128 MB or greater, 19" Monitor
<b>Mouse</b>	One port for mouse or trackball connection
<b>Printer</b>	One parallel or serial port for the printer when not printing via a network printer

### 4.1.4 Used disk space

Name	Comment
<b>Oracle Network Client Software</b>	1 GB
<b>AutoCAD Software</b>	6 GB
<b>eIMaster Software</b>	320 MB
<b>eIMaster Software, symbols</b>	320 MB



## 4.2 Software Requirements

### 4.2.1 Operating System

Name	Comment
<b>Windows Vista SP1 or later</b>	32-bit only
<b>Windows 7</b>	
<b>Windows 8</b>	

### 4.2.2 Server

Name	Comment
<b>Oracle Standard version 11g</b>	
<b>Oracle Standard version 12c</b>	

#### *Unicode Support*

To Support of Unicode in your Oracle database set the **Oracle Database Character Set** to UTF8.

Name	Comment
<b>NLS_CHARACTERSET</b>	UTF8

### 4.2.3 Application Server

Name	Comment
<b>Windows Server 2008r2, 2012, 2012r2</b>	
<b>Windows Authentication</b>	You need to install the Windows Authentication Feature
<b>Optionally a SSL certificate for the host system (if using https)</b>	

## 4.2.4 Client

Name	Comment
<b>Oracle Client</b>	Version 11.2.0.3 or higher, prior versions do not include support for .NET 4.5 and EF. The components needed are - Oracle Data Provider for .NET - Oracle Provider for OLE DB
<b>Autodesk AutoCAD 2013</b>	Products Electrical, Mechanical, P&ID, Plant 3D, Architecture
<b>Autodesk AutoCAD 2014</b>	Products Electrical, Mechanical, P&ID, Plant 3D, Architecture
<b>Autodesk AutoCAD 2015</b>	Products Electrical, Mechanical, P&ID, Plant 3D, Architecture
<b>Autodesk AutoCAD 2016</b>	Products Electrical, Mechanical, P&ID, Plant 3D, Architecture
<b>Autodesk Inventor 2014</b>	SP1, and for Operating System Windows 7, Windows 8.1
<b>Autodesk Inventor 2015</b>	
<b>Autodesk Inventor 2016</b>	
<b>Autodesk Revit 2014</b>	
<b>Autodesk Revit 2015</b>	
<b>Autodesk Revit 2016</b>	
<b>Microsoft, Office 2007</b>	
<b>Microsoft, Office 2010</b>	
<b>Microsoft, Office 2013</b>	
<b>Microsoft, Office 365</b>	
<b>Microsoft.Net Framework version 4.5</b>	
<b>Microsoft MDAC</b>	Required to enable use of Access as a format for briefcase, 32bit only

On Win 7 64-bit only 64-bit version of AutoCAD and Oracle client are supported.

If you have any questions concerning the software or hardware requirements contact us. See "Contacting".

## 5 New Functionality

### 5.1 Key Features

#### *New Product MasterViewer*

A new application for viewing Objects, Documents and Information Objects is introduced. The application is read-only and cannot change anything.

#### *Basic Solutions*

A new feature to reuse earlier finished solutions. It is easy to add Basic Solutions to existing main folder and it is easy to administrate.

Functionality:

- Use and fetch Basic Solutions directly in the explorer main folder.
- See what Basic Solutions that are ready for usage
- Basic Solutions get workflow control and vault functionality
- Use Publish functions to have control of what Basic Solutions should be possible to use
- Edit Parameters in the explorer
- Extended User Input Support for Parameters

### *Individuals and Qualification Module*

A new module for Individuals and Qualifications of equipment/articles are included in this release. This means that it possible to relate individuals to articles and also related objects to individual get at picture what individual is use where. The goal is to have a picture what is used where when a change is needed in the plant. Also included in the module is an overview dialog of objects that need to be qualified. In this overview you can see what objects/articles/individuals have the correct documentation.

### *New Concurrent Engineering Workspace*

A New feature included in the Project management module is to separate changes in one project from the main folder. The changes are made in a Project Folder. What does this mean?

- Changes made in the Project Folder will not be included in the Main folder until the Project Workflow Setting moves all changes to main folder.
- The changes can be revoked with no impacted of the main folder. Just remove the project folder and the changes are revoked.
- Changes can be made in two different projects without influence each other until the changes are moved to main folder. To handle conflicting changes when changes are to be moved into main folder there are collision handling, synchronize functionality and merge functionality.

### *AsBuilt Module*

The AsBuilt module is new in Master Concept 12. This module allows you to create and maintain AsBuilt, which is a record of the data from all completed projects in a Main Folder, which amounts to an up-to-date snapshot of the actual Plant.

A separate AsBuilt can be created for each Main Folder, and then updated automatically when Projects are completed. The Project Workflow setting now contains a checkbox for transferring data to AsBuilt.

### *Mounting Reports*

Another feature included in the AsBuilt module is the Mounting Report type. The Mounting Reports show what has been done in the project compared to what already exists in AsBuilt.

Mounting Reports are created as regular reports, except that they are typed as Mounting, and needs to be associated with a Project. The regular filters and formats can still be used. The Mounting Report type is available for the following Reports:

- Apparatus List
- Label List
- Connection Reports (CON1, CON2, CON12)

An additional general setting for the Mounting Report type is available using the variable REP\_MOUNTING\_DIFF. If this variable is set to FALSE, only +/- changes will be included in the Mounting Report. This means that only changes that require adding, replacing or removing an object/connection will be shown. If it is set to true any change will include the object/connection in the report.

### *Project Depending Reports*

The Project Depending Report type is used to get the complete picture of a report for a specific project. The Project Depending Report type can be used in two ways:

- Using AsBuilt – The report will get the corresponding data from AsBuilt as baseline data and then apply the changes made in the specified project. This will require an AsBuilt license.
- Not using AsBuilt – The report will use the previous revision as baseline data and then apply the changes made in the specified project.

The difference from the standard report type is that only changes in the specified project will be included, so even if you have made changes that match the filter of the report in a different project, it will not be displayed.

The Project Depending Report type is available for the following Reports:

- Apparatus List
- Label List
- Document List
- Connection Reports (CON1, CON2, CON12)
- Cable List
- Terminal Reports (TERM, TERM2)

### *New Interface for Design Applications*

The design application has started to use Ribbon User Interface. This ensures a modern user interface with easy to learn curve and easy access to commands.

Microsoft says *“Ribbons are the modern way to help users find, understand, and use commands efficiently and directly—with a minimum number of clicks, with less need to resort to trial-and-error, and without having to refer to help.”*

Read More: <http://msdn.microsoft.com/en-us/library/cc872782.aspx>

We are using AutoCAD functionality Workspace to distribute the user interface settings.

## 5.2 Smaller Features

### *Document denomination in object data tab*

When viewing the data tab for an object, the grid showing information about related documents now contains a column holding information about the document denomination.

### *Warning when changing the file extension of a document*

If you try to change the file extension of a document that has a physical file, you will now get a warning dialog asking if you really want to change the file extension. This warning is meant to prevent errors caused by incorrect file extensions.

### *Default file extension for document starts*

It is now possible to set a default extension for each document start. If no default extension is set then a default extension is retrieved from the template, if such one exists.

The filename of a document will receive the file extension of the document start selected for the document.

### *Ides Customer Experience Improvement Program*

MasterExplorer now supports Ides CEIP (Customer Experience Improvement Program). If enabled, this module will send Ides usage statistics containing information about which dialogs have been opened, the performance of database queries and which menu items were used in order to open dialogs. This is done in order to improve the performance and user experience of MasterExplorer.

The CEIP program is deactivated by default, and must be enabled manually by an administrator. For more information, please read the CEIP privacy policy before using the module.

### *Notes*

The notes dialog has five new columns. Two are holding information about when the note was last changed, two about in which main folder type the note should be visible and the last one if the note is private, i.e. it could only be viewed by its creator.

Master Explorer now keeps track of which note you have read. If an entity has notes unread by you, you will see the note icon in front of the entity in the tree.

The icon symbolizing notes has been changed to .

### *Workflow machine shown when editing project*

When a project is shown for edit, the workflow machine for the project will be displayed but not editable.

### *Actions on unconnected project depending reports prevented*

When a project depending report that is not connected to any project is generated, the generation will be stopped. Project depending reports must be connected to a project to be able to be generated.

A project depending report without any connected project will not be able to change its workflow step.

### *Document version note when copy structure*

The copy structure functionality will now enter the value found in the system variable EXP\_CP\_VERNOTE into the new document version notes.

### *CAD-Driver Inventor*

Ides CAD-Driver is now available for Autodesk Inventor.

### *DefaultUserFiles*

When upgrading to newer version, new files in DefaultUserFiles will be copied to any redirect.

### *Ribbon*

Project menu is now available from the Ribbon Object/Document context tab.

### *Search*

When searching in content an excerpt will be displayed. To increase performance, it's possible to disable this feature. To do so, create a variable called SEARCH\_SHOW\_EXCERPT and set its value to FALSE.

### *File - application menu*

The application menu is upgraded to an application menu in the same style as those used in MS Office. The old functionality is preserved and in addition there are tabs for recently opened documents and projects.

### *Changing parent project*

It is now possible to change the parent project of a project even after that the child project was created.

### *Active project color setting*

Previously the text node color of the active project was set by a default value. From this version it is possible to set a custom color for the active project. This is done in the Tree Browser Settings dialog.

### *Custom Columns*

Also included as a result of the qualification module is the ability to create “custom columns”, designed to show if an object or article have related documents of a certain type (e.g. qualification documents) without having to open a separate “connected documents” dialog and looking for a specific type of document.

### *Cable Routing Module, CAD 2D Drawing*

It is now possible to draw routing nodes and segments in a drawing. A new application type is available for this.

Functionality:

- Draw Nodes
- Get Coordinates
- Draw Segments
- Get Length Suggestion
- Show Cables that uses segment
- Show Fill and other data from Segment

### *Connect Document role module for articles*

A new role module to set permissions for connecting documents to articles has been added.

### *Cable inspector and Cables/Wires*

A new function connects these dialogs so that you can show the repository of cables from the cable inspector in the cables/wires dialog. And in cables/wires you can use the cable inspector as a lookup dialog to search for cables.

## **6 Updated Functionality**

### *More information in error reports*

Error reports sent to Ides now contains more details about the system where the error occurred. The new information is

- If the process and the machine works with 32 or 64 bits.
- Which database the system was connected to.
- Which main folder that was in use.

### *Delete in lists*

When a row in a list has been deleted, the next row will now gain focus. This means you could click the delete button several times to remove several rows from the list without needing to select them.

### *Briefcase module*

Minor bugfixes and enhancements have been made to the briefcase module. All types of errors now lead to highlighting the rows in red.

### *Briefcases now visible under projects*

In order to better see under which projects briefcases have been imported or exported, briefcases are now listed under their related projects.

### *Delete on gridviews*

A confirmation dialog has been added when the user deletes a grid view. The delete function in the drop down box is removed.

### *Template lookup preview uses EXP\_VIEWER\_SETTING*

The preview component selected for previewing documents when fetching template from the vault when creating a new document is now selected based on the value in the system variable EXP\_VIEWER\_SETTING.

### *Copy structure/Basic solution-window*

When copying a structure/a basic solution then the window for administrating the copy will only show the object structure grid if it contains any objects.

### *Articles*

The Articles button has been moved from the Administration ribbon to the home ribbon. The same role module setting still applies.

It is now possible to browse to Articles from the Articles tab in the Advanced Find dialog and the Object property control in the Data Tab.

It is now possible to view Article files and connected objects from the Articles tab in the Advanced Find dialog

### *Export/Import Main Folder Handles all data (Case 18082)*

### *Login as other user is renamed to Restart*

### *Oracle 12c*

Added support for the database version Oracle 12c.

### *CAD-Driver*

Added support for AutoCAD 2015.



### *Title Block to Database*

Function handles all free data for document.

### *IdesToolPalette*

- Has the possibility to search symbols in the active library
- Shortcuts buttons to groups are included in palette

### *Changing project*

It is now possible to change active project even though the search or article dialog are open.

### *Delete in lists*

Previously it was impossible to delete several rows in a list by clicking the delete button several times. This is fixed in this version.

### *Changed color of rows in the briefcase import dialog*

The colors marking new values, changed values, etc. in the briefcase import dialog is changed to better match the colors with the same meaning in other dialogs.

### *Article Dialog*

The article dialog can now be used to relate articles and documents (no qualification module required). Customers with the qualification module can create and edit article individuals.

### *Automatic Cable Routing Module*

The automatic cable routing module has been updated with more information in order to provide better transparency to the user as to the cause of validation results.

It is now possible to reload segments and segment articles directly in the dialog after updating segment data, without having to restart the dialog and reload the segment cache.

### *Grid filtering*

Grids can now be filtered on blank and non-blank cell values.

### *Changing document file extension*

The document list will now warn you if you are trying to save a change that has changed the file extension of a document. This is to avoid problems caused by programs not recognizing the new extension.

### *AutoDoc not changing document number or sheet*

The AutoDoc functionality will no longer change the document number or the sheet of existing documents.

### *PDF Viewer*

An alternative PDF Viewer has been added. Enable this viewer by setting the EXP\_VIEWER\_SETTING variable to *Internal2*.

### **Search**

The filter buttons have been moved from the menu Types to the Options group for easier access.

## **7 Release Fix 1 (12.0.1)**

### **7.1 Explorer**

#### *Preview Tab*

Enhancements has been made to the internal viewer.

#### *Additional files do not follow the document when creating a new revision (Case 25567)*

When creating a new revision of a document additional files such as raster files are now copied to the new revision of the document.

#### *Merge Together*

The Articles on the main object are used. Only when main object doesn't have any articles connected the articles from the other object is being used.

#### *Vault Database Verification (Case 25723)*

The verification is now case insensitive, since different Oracle versions may return different results.

#### *Copy Standard (Case 25466)*

An issue with Document Types in Copy Standard has been resolved.

#### *Edit Connections Dialog (Case 25444)*

Fixed an issue where the Remark 3 field of the connection would not display the correct value in certain cases.

### *Automatic Allocation*

A new setting is now available when allocating wires: Exclude external Terminals.

Checking this setting will count connections between external terminals within a common object as not having that object in common.

For example:

A connection is made from +SA.1.X1:1/2 to +SA.1.X1:7/2.

Normally this connection will have the +SA.1 object as common object, but using this setting will make it so that the common object will be +SA.

This can be useful i.e. when you want different numbering on the external connection in an enclosure.

### *Connection/Terminal Reports*

A new filter setting, Exclude external Terminals, with the same functionality as described above has been added to the following reports:

- Con1
- Con2
- Con12
- Term
- Term2

### *Allocation Rules*

A new setting has been added to the Allocation Rules: Wire Allocation Sorting Category.

If a category is specified on a rule, the connections will be sorted a bit different than usual.

Normally the connections are sorted after the smallest (alphanumerically) connection side, no matter if it's the "From" or the "To" side. Specifying a sorting category will ensure that connections that are connected to an object of that category will be sorted only by that object.

For example:

A connection is made from +SA.1.X1:1/2 to +SA.1.K23:A1.

Normally this would be sorted after the +SA.1.K23 object, but if you specify CE TERM\_GROUP as the Wire Allocation Sorting Category it will be sorted after the +SA.1.X1 object.

This can be useful i.e. when you want to sort connection according to the terminals they are connected to, no matter what the other side is connected to.

## **7.2 Design**

### *Quick Access Toolbar*

Fixed issue with images in QAT.

### *Nodes and Segments*

- A warning will be shown if node already is inserted in a drawing.
- Edit dialogs will focus number field.
- Nodes will only allow Upper Designations.

### *Design to PDF*

- Added support for AutoCAD 2015.
- Fixed issue with license path.

### *Convert elProcad drawings*

The function is updated so that drawings can be converted with batch functions in design before importing them to Master explorer. If you need to convert elProcad drawings please contact ides support for help with settings.

### *Save to Database*

Performance enhancements have been made when dealing with large subnets.

## **7.3 Configurator**

### *Shortcuts*

Updated with new shortcuts.

## 8 Release Service Release 1

### 8.1 New Functionality

#### 8.1.1 Explorer

##### *Drag and Drop in the tree*

It is now possible to handle documents, objects and information items in the tree by using drag and drop. It is also possible to copy an information item using drag and drop.

The handling is centered on the information items in the sense that only information items can be the receiving node.

When importing a document by dropping it to a Grouping folder, the import will use the entire structure of grouping folders in the tree and adding their values to the document in the import dialog. This way the dropped and imported documents will appear at the same position where they were dropped.

##### *Grouping nodes in free structure*

It is now possible to group nodes in the free structure, usually cables, in the same way that documents have been grouped. This allows for a better overview in systems with many objects in this structure.

##### *Improved Quick Search*

The quick search toolbar has been moved above the tree view, and the UI has been redesigned in order to improve accessibility and usability. You can now search the contents of documents by toggling the "Content" search button, and the previously available modes of searching of documents, objects and information objects has been improved in terms of speed and stability.

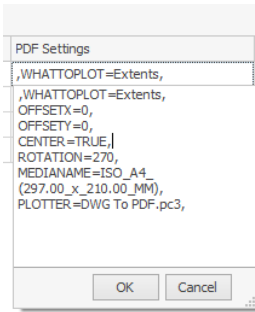
If multiple results are found, you can now also use the forward and back toggling of results (F3 and Shift+F3 or using the arrows), and the results can be displayed in the lists view to the right for easier overview.

The searches are now made in the currently active main folder only to simplify the searches, please use the advanced find dialog for searching across multiple main folders.

Ides URIs can now be entered in the quick search text field, i.e. the links that are entered in to the clipboard when using the "Create text link" under the "Send to" menu.

##### *PDF plot Settings*

It's now possible to specify PDF plot settings. Supported applications are Autodesk AutoCAD (including verticals) and Autodesk Inventor (Drawing only).



### *New document menu*

A new menu placed under the “New Document” option makes it possible to create a document of a specific type directly. The menu options are based on the system variable EXP\_DOCMENU\_OPTION which could have the values “LIST”, “MOSTUSED” or “BOTH”.

### *Open documents after new revision*

Documents can now be automatically opened directly after revising them in the “new revision” dialog.

### *New document on Object*

It is now possible to add a new document on an object to get the common item designation directly

### *Copy/Paste document*

It is now possible to copy a document using ctrl+c and then pasting it using ctrl+v.

Sheet based document:

A new sheet is created and the document file from the original is copied to it.

Sheet-less:

The new document dialog is shown prepopulated with data from the original document as a template. Once the document is created the document file from the original is copied to the new document.

No additional files are copied in either case.

### *Automatic Allocation (Wires)*

A new setting has been added to the Automatic Allocation Dialog. When choosing to not allocate Links, it is now possible to allocate wires on the connections that would have been Links.

### *Autonumber*

The Autonumber function has been changed. You can now choose between allocating either Links & Wires or Only Wires.

- Links & Wires – This is how the function has always worked, Links are created if possible, otherwise Wires.
- Only Wires – Link allocation is ignored and Wires are allocated on all connections.

### *System Design Reports*

It is now possible to create Project Depending variants of the System Design reports.

### *Default generated sequence IDs for new main folders*

It is now possible to use a predefined sequence ID for new main folders, for users that just want a unique ID. A prefix can also be used.

### *Custom Main Folder Captions*

You can now choose a combination of field values of the main folder to be displayed as the caption, enabling more information to be displayed in the tree browser.

### *Last Used Main Folder*

The last used main folder for a user is selected during the next upstart for that user.

### *Default preview template*

It is now possible to add a default template that is used when previewing files in an external application, when using the default internal pdf preview control this setting is not in use.

To set a default template create a file called 'default.html' with the appropriate content for launching the preview in your Viewertemplates folder. It is possible to see/set the location of this folder by right clicking the standard in question in the 'Standard Configuration' administration dialog and selecting 'Change Path...' and looking at the value 'Template Directory'.

### *Shared preview folder / Autovue red-lining*

An option has been added that allow for the use of the same path all the time when previewing documents. Normally they are stored in a temporary structure that will be generated using a different path for every preview occasion. This is to prevent that the preview files can be locked by another preview application or user.

By setting the variable EXP\_SHARED\_PREVIEW\_FOLDER to a folder preview document will instead be written to a structure under this folder according to the following scheme:

EXP\_SHARED\_PREVIEW\_FOLDER\Main Folder\Revision\Path set on the document\Filename

So for example the document with main folder mainf, revision – and path: .\my docs\1.docx would with a setting of "p:\preview" be written to:

p:\preview\mainf\-\my docs\1.docx

Observe that documents with a common working folder set are unaffected by this setting as they are previewed in place.

## 8.1.2 Design

### *AutoCAD New included in Ribbon*

It is now quicker to create a new drawing using New... create a new drawing using the template dialog or New that uses the predefined template in the autocad profile.

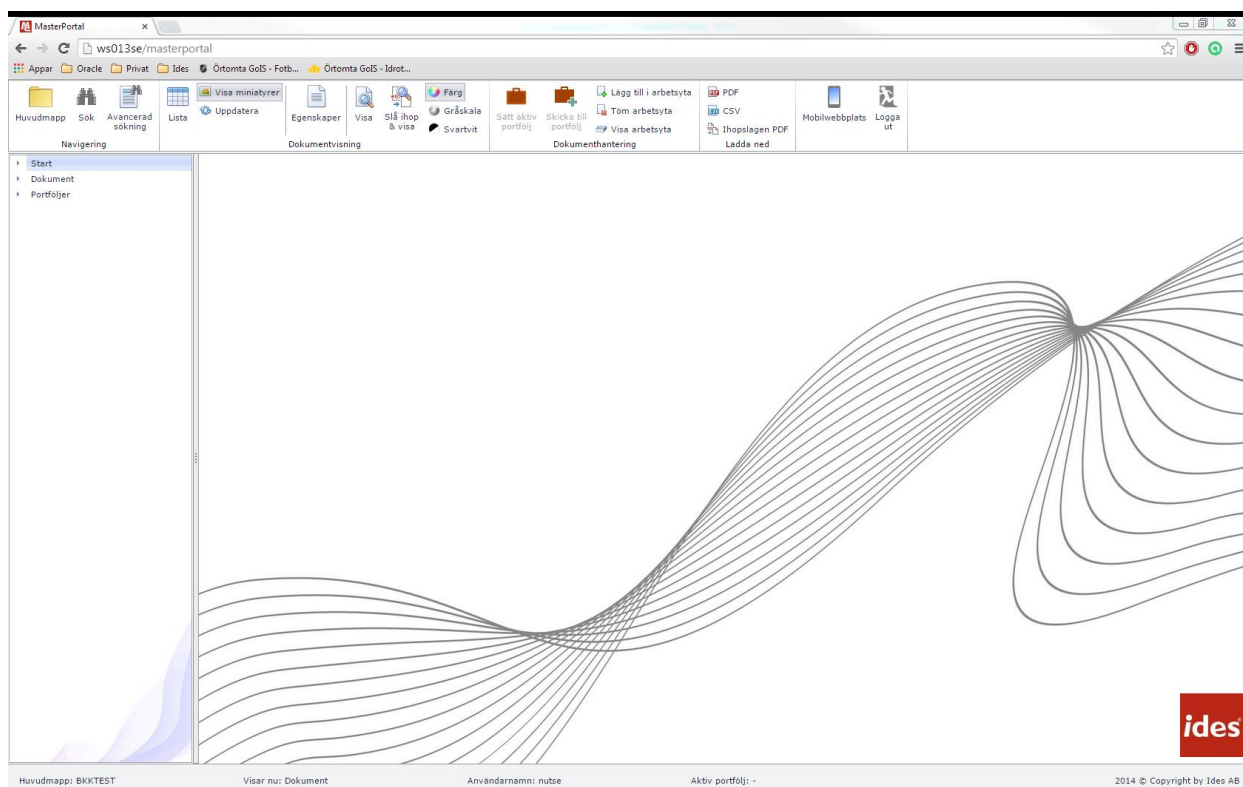
### *Cable Routing – Cable paths*

There is a new function that draws cable paths in ELOD drawings. The cable paths are scaled down to fit into the drawing form.

## 8.1.3 MasterPortal

A new web based version of MasterPortal has been released. For more information see:

<http://www.idesglobal.com/masterconcept/masterportal/>





## 8.2 Updated Functionality

### 8.2.1 Explorer

#### *The Label Configuration dialog*

Labels are now only created on the language chosen in the label configuration dialog. The user has the option to create the label in other languages through the right click menu in the editing tool to the right in the Label configuration editor.

For labels of list types the user now has the possibility to delete rows in the list through a right click menu.

For labels in the document labels view the document type is now presented to be more readable.

#### *Labels Update*

- Fixed several issues regarding Label Role Settings.
- Task Data Tab now supports grouping of Free Data.
- Fixed sorting of Groups when displayed in Data Tab.
- Labels for Documents now support Hidden and Read-only role setting.
- Labels for Information Objects now support Hidden and Read-only role setting.
- Fixed label for field KEYA01 in Document Data Tab.
- Label Configuration dialog UI improvements.
- New label type has been added, SQL Query.
- All labels now support Automatic Suggestion List label type.
- Added Denomination as static label for Information Objects.
- Label Configuration dialog performance enhancements.
- By right clicking on a label, you can now see in which categories and fields a label is used.
- Demand data is now highlighted in Object List

#### *Improvements in the validation of label editors*

If values of the wrong type are pasted into cells with label editors (e.g. text pasted into a number field), validation will prevent the wrong data from being imported. This problem could previously occur after using the paste functionality in grid cells with custom label editors (e.g. Number fields etc).

#### *Property Mapping*

- Document Properties Lookup

It is now possible to import properties from Office and AutoCAD documents based on property mappings when they are imported using the document import functionality.

- Revisions with property mapping

It is now possible to set which data about the document revisions that are passed to the document through the property mapping functionality. The data sources “Revision – Approved” and “Revision – Created” are used in the property mapping dialog to specify revision data.

- Property mapping data format

How the data should be formatted is decided based on the property mapping configuration. For example, using the method upper() in the Database Field column will give the data in uppercase.

- Stored procedure

Stored procedures have been removed as a separate selection in the property mapping administration dialog. Instead, it is possible to use stored procedures directly in the Database Field column without setting a specific data source.

- Default property mapping set

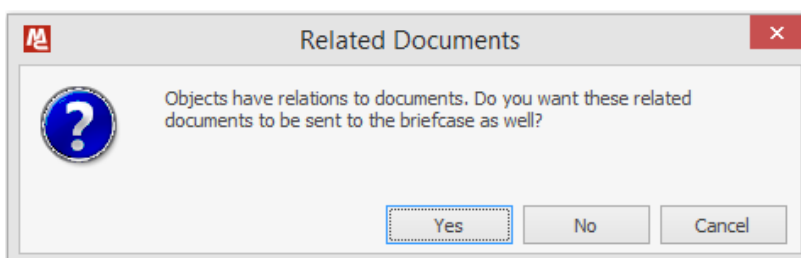
When upgrading the database, a property mapping set named “Standard” will be inserted into the database. Using it will provide opened document with the most used values from Master Concept. If the database already contains such a property mapping set then the documents using it might receive some more values but in any other case the configuration is unaffected.

- CAD Documents

It is now possible to use the property mapping functionality to receive values from Master Concept in opened CAD documents.

### *Briefcase Changes*

- As of version 12.1 of MasterConcept, the choice of including documents related to objects is made when adding an object to the briefcase and not as a general choice for all objects included in the briefcase.



- The fileserver directory can now be included in the exports by checking the “Fileserver” checkbox on the “what to export” tab.

### *Importing mail and their attachments*

When mails are inserted to the import dialog from Microsoft Outlook, the import dialog will look for any attachments and add them to the dialog as well. Those attachments are later related as children to the mail document when the documents in the dialog have been imported.

### *Filtered choices for type code and language in Import Documents*

The combo boxes for type code and language in the Import Documents dialog are now per default filtered by the file extension of the file being imported. There is a new check button in the toolbar that can be unchecked if all type codes and language combinations should be available.

### *Removing relations*

Instead of removing a relation by selecting both the parent and the child and then right click and selecting to remove the relation, it is now possible to just right click the child and select the remove relation option. The relation to the current tree parent will be removed. The option to remove the relation is also available in the Ribbon.

### *Delete Documents*

A new variable, EXP\_DOC\_ALLOWDELETERELATEDOBS, has been added to the system. This controls if the *Delete Related Objects* checkbox is enabled or not when deleting documents. Default this is set to TRUE.

### *Search*

- Easier to Select Type
- Added possibility to control Exact match or Wildcards

### *Import approved documents in approved status in Briefcase*

When set, documents that are approved in the briefcase will be importer as approved. This is settings can be found in Briefcase Settings or set the variable BRIEF\_SAVE\_APPROVEDATA to true.

### *Preview Tab*

- Internal2 viewer now supports converting previewed document to Monochrome.
- It's now possible to preview images.

### *Importing basic solutions*

It is possible to import basic solutions when standing on the "Basic Solutions" node in the tree. A ribbon button, "Import Basic Solutions", will appear second next to the "Import Documents" button. The dialog for importing basic solutions works in a very similar way as the dialog for importing documents. One difference to note is that the dialog for importing basic solutions will check-in the basic solutions after the import.

### *PDF Merge – Documents and Information Objects*

It is now possible to create merged PDFs from a list of selected documents as well as from Information Objects. The PDF created from the Information Object is not recursive, so only documents related directly to the Information Object is included.

### *PDF Merge – PM\_RETURN*

A new variable has been added, PM\_RETURN.

This can have four different values:

- Nothing – Default value, nothing happens after the PDF has been created.
- Message – A message will let the user know where the PDF is located.
- Folder – The folder containing the created PDF will be opened.
- File – The created PDF will be opened.

### *PDF Merge – Document Grouping*

The PDF Merge functionality now supports all five document grouping levels, as well as groupings on empty values.

### *Copy Structure Performance Improved*

The performance in the initial document validation step in “copy structure” has been greatly improved.

### *Browse to Project*

- Right Click in Data Tab
- Right Click in Object/Document Status Dialog

### *System Design*

The context menu has been modified to include the regular Article submenu. This enables you quick access to the most commonly used articles for each category.

A new validation has also been added before save, making sure that all sub objects match the main object. This will prevent objects being created in the wrong structure.

### *Cable Inspector*

It is now possible to browse through the filtered cables by pressing Page Up and Page Down.

### *Unexpected error when creating a new version of a checked in document (case: 25544)*

A problem has been corrected where an error was encountered while creating a new version of a checked in document containing one or more additional files.

## 8.2.2 Design

### *CAD-Driver*

- It's now possible to reset MasterConcept Workspace through DesignUISettings.xml.
- New variable. DOC\_CADOPENZOOM. Zoom Extents when opening an AutoCAD drawing. Values, TRUE/FALSE.
- Automatically generates PDF when saving document. This functionality has been added with an option to turn it off.
- Now reads PDF plot settings from the Document Type.
- Now possible to set Summary information (Document properties) through Property Mapping.
- Now possible to set block attributes through Property Mapping.

### *Fields and property mapping*

It is now possible to use fields in drawings so that document data is updated without using the mapping in the form administrator. There is an example form Mluser/schema/ides-a3l that uses a standard document property mapping.

### *Mechanical link Show / Hide attributes*

Attributes are hidden on sub symbols when adding a mechanical link. Autocad commands like move erase stretch will not update the visibility on the attributes. To update the visibility use Show / Hide in the properties panel.

### *Create Layout symbols*

Functions for inserting attributes to the layout symbols are updated so that right size, layer and color is used. Adding punch attribute to the symbol is also added in the dialog.

### *Next / previous sheet*

The functions Next and previous sheet now also works on documents that are in an offline or read only state.

### *Draft or decorative bounding frames*

If a bounding frame is drawn on a decorative or draft layer it will work the same way as a bounding frame on a circuit layer with the exception that the data on the bounding frame will not be stored to the database.

## 9 Release Fix 1 (12.1.1)

### 9.1 New Functionality

#### 9.1.1 Important Changes

##### *Changed database driver*

The used Oracle driver has been changed, in 12.1 there was a requirement for Oracle Managed Data Provider for .NET. This requirement has been lifted and we no longer install this client with the installation program. Instead we use [Oracle Data Provider for .NET](#) which is a separate prerequisite install which replaces the need for any other Oracle client.

The components needed from the Oracle Data Provider for .NET installation are

- Oracle Data Provider for .NET
- Oracle Provider for OLE DB

Don't hesitate to contact support if there are any questions regarding this driver change.

#### 9.1.2 Explorer

##### *Document Start, Revit Type*

An option to select Autodesk Revit specific variants has been added. This will be used as a filter when importing documents from a Revit model.

##### *Remove from Project (Case 26823)*

The function Remove from Project has been connected to the Role Module Project Administration.

##### *Option to disable open on double click in document list*

It is now possible to disable the functionality which opens documents when they are double clicked in the document list. This is accomplished by setting the variable DOCLST\_DBLCLK to FALSE.

##### *Cable Inspector*

Two new functions that open the Edit Cable/Wires dialog with same filter

- Show Cables in List
- Show Cable Parts in List

##### *Edit Cable/Wires Advanced Find*

This Advanced Find functionality uses the same filter dialog as in cable inspector to locate cables.

### 9.1.3 Bug fixes

- The quick search functionality is now able to search and find projects further down in project hierarchies (below two sublevels).
- The configuration for main folder display fields is now working correctly with all fields.
- When document grouping folders were selected further down the grouping structure (3 levels+), the document list wasn't filtering on the grouping correctly and showed all documents.
- Document variants were sometimes displayed incorrectly in the document list when selecting documents.

### 9.1.4 Design

#### *CAD-Driver*

Introducing Ides CAD-Driver for Revit. Ides CAD-Driver for Revit provides a seamless integration with a MasterConcept database. It provides functionality such as importing views from a Revit model and updating view data.

#### *Chinese Symbol descriptions*

Symbol descriptions in the symbol palette is displayed with the selected application language, if description is missing English descriptions are used. Chinese descriptions are now supported.

### 9.1.5 MasterPortal

#### *Tree grouping*

The documents should now be grouped according to the users' setting instead of using the MasterPortal database users setting. The setting is controlled by the variable EXP\_DOC\_GROUPFIELD# where # is replaced by the grouping level. For users' who also use MasterExplorer this setting can be changed by right clicking the Documents node.

## 10 Release Fix 2 (12.1.2)

### 10.1.1 Important Changes

#### *Changed database driver*

In 12.1.1 we introduced a new Oracle driver, there was a problem with this causing the requirement to be a bit too narrow and we needed the exact version of Oracle that the application was built against. This has now been rectified and the requirement is as specified for 12.1.1:

- Oracle Data Provider for .NET (.NET 4)
- Oracle Provider for OLE DB

This means that any Oracle Client is supported as long as these components are included, the main limitation posed by this is that Oracle Data Provider for .NET is only included as a .NET 4 version from Oracle Client (or ODAC) 11.2.0.3 making this is the lowest version that we can support.

### 10.1.2 Explorer

#### *Improved login dialog*

The login dialog will now log errors when debug logging is enabled and the functionality to determine if the database supports OS authentication has been improved.

#### *Fixed a crash when starting the Explorer on a 32bit system*

In some circumstances there could be a problem with MasterExplorer crashing before the login screen on 32bit systems.

### 10.1.3 MasterPortal

#### *License Manager Network path*

It is now possible to run the MasterPortal license service on the same system as MasterExplorer without problems with vbs based document starts, plugins and design.



## 11 Release Fix 3 (12.1.3)

This chapter contains information about the bug fixes in fix 3 for SR1.

### 11.1 Explorer

#### *Wire Allocation (Case 27462)*

A new variable, FT\_WIRE\_EXACTCODES, has been added to control how the wire allocation retrieves articles from codes. The default behavior remains, where empty codes are disregarded in the lookup. When FT\_WIRE\_EXACTCODES is set to TRUE however, all codes must match for an article to be retrieved.

#### *PDF Merge (Case 27690)*

An issue where the sorting wasn't working properly when using the PDF Merge functionality on a custom selection of documents has been fixed.

### 11.2 Design

#### *Plot PDF (Case 27763)*

An issue with plotting to PDF has been fixed.

### 11.3 Masterportal

#### *Non-approved documents now visible*

Only approved documents of the last revision were visible in MasterPortal, now non-approved documents are visible if they are published.

#### *MP\_COLUMN variables now read correctly*

Labels for the document list column headers were only read for the standard, MP\_COLUMN variables set more specifically were ignored.

#### *Browsing to other main folders*

When a browse or search link targeted another main folder, the main folder would not change and the browsing or search would fail.

#### *All labels now displayed in the advanced find dialog*

Not all labels were displayed in the advanced find dialog, if multiple labels existed on the same field only the first label found on the field would be shown.

### *Advanced search labels not updated after main folder change*

Labels in the advanced find dialog would not update after switching the main folder.

### *Grouping documents on workflow phase*

Grouping documents on workflow phases could result in errors after expanding the documents folder.

### *Labels in advanced find dialog displayed in wrong language*

Labels in the advanced search dialog did not follow the language setting set in the masterportal config file, but the databases language setting.

### *Ignore compability mode*

MasterPortal will now try to ignore the compability mode when the system policy allows it, in order to display MasterPortal correctly on domains where compability mode is enabled on intranet sites.

### *Searching on object index fields*

It is now possible to use the search function on the index fields set up for objects, and not just on the objects designations. A checkbox "Objects" is available in the search pane for this, and the "Object designations" checkbox searches through object designations only.

## 12 Release Fix 4 (12.1.4)

This chapter contains information about the bug fixes in fix 4 for SR1.

### 12.1 Explorer

#### *Apparatus List Difference List (Case 27784)*

Resolved an issue where the difference list would not show the revision marking if a main article was changed while a sub article was left unchanged.

#### *Connection Reports (Case 28303)*

Resolved an issue where the combination of using both from and to designation filters as well as using the "Include Cable Sides in filter search" setting would cause the report to crash.

#### *Autonumber*

The FT\_WIRE\_EXACTCODES variable now also affects Autonumber, not only Automatic Allocation.

#### *PDF Previews*

The system can now create PDF Preview files from CALS files using the PDF Generation plugin.

### 12.2 Design

#### *Map multiple IO-Channels to one terminal (Case 34854)*

It is now possible to disable the check that only allows only one channel to be mapped to a terminal. This is done by setting the database variable IO\_MapOneChannelToTerm to FALSE. The default value is TRUE.

## 13 Release Fix 5 (12.1.5)

### 13.1 Explorer

#### *Connection Report*

The connection report handles filters in both to and from designation filter.

#### *Document editor dialog*

Changing the language while having a typecode selected with a typegroup enabled would cause certain typecodes to be visible.

#### *Document template selection*

The document template selector would list additional document types beyond the filtered one.

#### *Project node icon not updating in project folder mode*

The workflow state image would not update when changing the project state.

### 13.2 Design

#### *Icons for the Ides Tool Palette*

Changed so application doesn't need read/write rights to the directory where icon files is located.

#### *Cable sign symbol – read only*

The cable sign symbol is read only in drawings with database connection since data is always updated from the database.

#### *Old elMaster drawings*

Old elMaster drawings without doctype in the configuration point are now identified as Circuit or layout drawings.

#### *DocMaster, IEC designations*

IEC designations are now visible in design when connecting with using docMaster technical.

#### *Reference signals*

Problem in 12.1.4 with creating a reference signals with brackets is solved.

## 14 Release Service Release 2

### 14.1 New Functionality

#### *Performance*

In 12.2 version we have addressed some issues for performance when the database connections a bit slow. We have reduced the calls made to the server to make the wait time (latency) from server response to be as low as possible.

We have addressed this in the following areas

- Save to database from elMaster Design and ProMaster Design
- Objects in Tree Browser, Object Lists and Right Mouse Menu
- Document in Tree Browser, Document Lists and Right Mouse Menu

We made smaller fixes regarding this in other areas so even if you have a good connection you will notice some changes that the user interface is more rapid.

#### *Notifications*

The system can now send notifications to users in the system. The notifications can be sent when something happens or when the user should do something for example signing a workflow step. (like a reminder)

The user can also subscribe to changes happening to an information object or a document.

The notifications can be inform of an email or notifications in the database or a MasterCommunity mail.

There is also a new overview dialog to see the database notifications. There are also possible to make own templates for the notifications.

This requires an Ides Application Server installed available for the client. Please Contact Ides Support for this.

#### *Revit CAD-Driver*

Added functionality to CAD-Driver for Revit

- Synchronize objects and articles
- Create and connect objects
- View object properties

#### *Project Overview*

A new dialog to list all projects has been added. This makes it easy to filter and find projects.

### *Project management for Information objects*

Information objects are now included in the Project Management functionality. The main features include:

- Information Object logging (Reserved, Created, Edited, Deleted)
- Handling Information objects in project folders as well as in AsBuilt.
- Project Tree includes information objects

### *Project Phases Dates*

It is now possible to enter start and end date for each phase.

### *Document Type Group*

It is now possible to group the document types. This will help to find the document type you are looking for.

### *Grid Functionality*

- New Filter for Dates Columns – Between Dates
- Filter Field added to Grid Option Menu
- Best Fit (all columns) added to Grid Option Menu

### *Copy information object structure*

A “structure” or hierarchy of information objects can now be copied and pasted under other information objects or as a new “root” structure in the same main folder or to another main folder within the same standard. Related document can also be included in the structure copy.

### *Labels – Filtered Lists*

Two new types of labels has been added:

- Filtered List of Values
- Filtered Suggestion List

The new types behaves as the regular lists, except that there is an extra column for the filter value. When using the filtered list you must also specify which other field should be used to filter the list.

### *Labels – Calculated fields and formatting*

The Calculated field label type is now available on all entities, Objects, Documents and Items. A new option to format the calculated values has also been added, here you can specify a Regexp (Regular Expression) or a database function to use on your value.

### *Default Workflow Signatures*

It is possible to set workflow signatures that a document should receive automatically when created. The administration dialog is found at *Administration -> Document -> Default Workflow Signatures...* It is also possible to edit some parts of the configuration by right clicking on a main folder or project and select *Default Workflow Signatures...*

### *Watermarks*

A new handling of watermarks for the generated PDF's has been implemented. The user can specify an image or a text (including font, size, style, color and rotation) that will be added to the PDF as a watermark. It is also possible to specify for which Type Codes the Watermark is to be used. The watermark to use is specified in the Document workflow phase, s you can for example add a "Draft"-watermark to all documents in your draft-workflow phase.

### *Transfer of document data to PDF files*

When a PDF file is created from a file (when checking in that file for example), the document data from the file will be transferred to the PDF file. What met data that is transferred is defined by the property mapping list selected in *Home -> Settings -> Documents -> Property mapping for generated PDF files*.

### *Sending outlook emails and saving sent emails from MasterConcept*

By enabling a setting (see separate manual), documents can be sent via outlook from MasterConcept. This feature differs from the previous "Send via mail" functionality, since the sent emails can be saved and related to an information object.

Emails can also be sent to the subscribers of a selected document, if the subscription functionality is enabled.

### *Inherited document permissions*

When a document is related to an information item, the document will inherit document permissions from the information item. The permissions inherited are defined by the document permission template set on the information item (right click and select *Edit Permissions...*).

### *New PDF Plot Setting, Layers for AutoCAD Files*

New PDF Plot Setting makes it possible to set layer visibility. *Layers=Layer1;Layer2* will only plot layers by the name of Layer1 and Layer2.

### *New Plot Settings, Use XPS for Office Files*

An alternative to the EXP\_USE\_MSXPS variable has been added. It is now possible to set this according to document type in the *PDF Settings* column in the Document Types dialog (*XPSPlot=true*).

### Microsoft Active Directory Synchronization

It is now possible to activate Active Directory synchronization in MasterConcept. The synchronization will create/update users and roles in the system representing the AD users and groups in an OU pointed out by an administrator.

## 14.2 Updated functionality

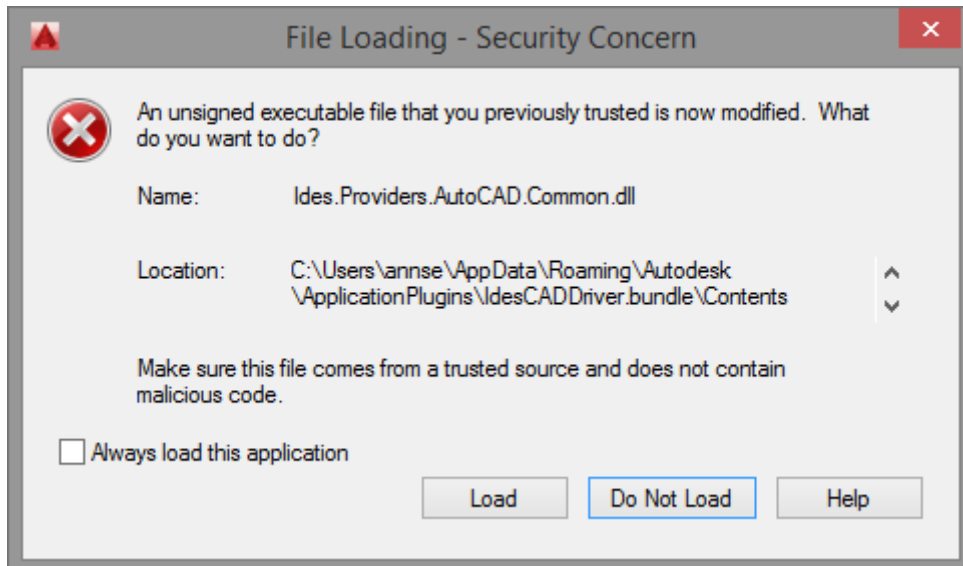
### Autodesk supported versions.

- Added support for Revit 2014 - 2016
- Added support for AutoCAD 2016
- Added support for AutoCAD Architecture 2014 -2016
- Removed support for AutoCAD 2012

### AutoCAD 2016 Security

Due to some changes concerning security made in AutoCAD 2016 Ides CAD Driver might trigger a warning. To avoid this warning either check “*Always load this application*” or add the location to *Trusted Locations*. Some functionality in MasterConcept such as reading document properties when importing a dwg document, requires that the location is added to *Trusted Locations*.

In the warning dialog, check “*Always load this application*” and click *Load*.



To add the location to *Trusted Locations*, select *Options* in the Application Menu, select the System tab and click *Security Options*. Add the location %appdata%\Autodesk\ApplicationPlugins\IdesCADDriver.bundle\Contents\AutoCAD\2015.



### *Read-only Role Modules*

When a user is granted a Read-only Role Module the content that the module affects will become read-only for said user. If the user is assigned to more than one role, all roles must be granted with the Read-only Role Module in order for the content that the module affects to become read-only.

Read-only Role Modules:

- Read-only mode for Articles
- Read-only mode for Individuals
- Read-only mode for Qualification Data

### *Role based access control to plugins*

You can now control access to plugins for roles, and not just on a user basis. To deactivate access for a user, the plugin has to be deactivated for the user and the roles of the user.

### *Inactivate User*

It is now possible to inactive a user.

### *Copy/paste document*

Copy and paste document is now available in ribbon and document right click menu.

### *Relate multiple objects to document*

It is now possible to select several objects in the object lookup dialog when relating an object to a document.

### *Open revised report*

The user can choose to open the revised report(s) right after the new revision is created

### *Workflow portlets*

The workflow portlets for documents and projects have been updated. A spreadsheet view has been added which can be reached from the right click menu.

### *Changes in project handling - reserve and add documents for transfer*

Reserved documents and objects are now visible in the data transfer dialog as reserved or manually added, and you can manually add documents for transfer to a project folder. There is also a new menu item for directly selecting the documents or objects you want to add for project folder transfer.

### *PDF Merge*

This functionality is now included in the menus.

### *PDF Viewer*

The old PDF Viewer as well as the EXP\_VIEWER\_SETTING value *Internal2* has been removed. The new PDF Viewer is now enabled by setting the EXP\_VIEWER\_SETTING variable to *Internal*.

### *Generating PDF (Case 26144)*

An issue regarding generating PDF with Microsoft Office 365 has been fixed

### *Improved validation of data after pasting to grids*

Sometimes a user could paste data into a grid that didn't correspond with the labels data type, e.g. text in a number field. This is now validated with an error message.

### *Improved validation of briefcase data imports*

Users will now be warned if a briefcase has invalid data on fields with labels that specify a different data type, e.g. text in a field with a label of type "number" or a regular expression.

### *Handling of mail attachments at document import*

It is now possible to set how the document import should handle attachments of mail files. Open the settings dialog from the import dialog to edit this setting.

### *XREF Verification*

To prevent breaking an external reference it's now possible to verify XREF's during document import. A document-document relation can also be created.

### *Briefcase exports could fail with documents related to each other*

When exporting documents with relations that are related to each other, the related documents could fail to be exported. Warnings about missing drawing files for the documents would be visible when importing the briefcase.

### *Logins after the first login failed because of license or role check*

If the first login attempt failed for a user because of lack of assigned roles or an invalid license, the following login attempt with another user or with a valid license could fail.

### *Project folder transfers would sometimes fail*

On rare occasions the project folder creation would fail with a "null reference" exception.

### *Opening and closing powerpoint documents would sometimes result in an error*

An error dialog mentioning “com exception” would sometimes be displayed after closing a PowerPoint document opened in masterexplorer. The explorer would also be locked while the PowerPoint document was open.

### *Disposing temporary files*

Master Explorer creates temporary files in the local storage when a document is previewed. Those file are automatically handled and removed when Master Explorer is closed.

### *Quick selection for creating new document*

The new document option in the right click menu on information object has been expanded to also contain options to create a new document of a specific document type.

### *New sheet inheriting relations*

When a new sheet is created by right clicking a document under an information object in the tree, the new sheet will get a relation to the information object.

### *Right click on document folder node*

It is now possible to open the document menu by right clicking on a document folder node in the tree.

### *Layer function*

There is a function for changing layer between decorative and circuit layer. It is changed to match the behavior of AutoCAD’s function for changing layer. If nothing is selected the current layer is changed, if entities are selected, PICKFIRST, then the layer on those entities are changed but not the current layer.

### *Length bar*

It is now also possible to specify the length by selecting another symbol and multiply the symbols length with a factor (number of symbols to fit inside the bar).

### *Zero number*

Function for numbering internal wires is made easier.

### *Free symbol – change line type*

It is now possible to change the line type on the circle/rectangle on the free symbol, simply by changing the line type for the block.

### *Terminal bar functions*

Functions for inserting/connecting terminal bars in layout are updated. It is now easier to append terminals to an existing row.

### *Manage / creating symbols*

Ribbon panel MC Manage / Symbol is expanding / shrinking with the initial and reset symbol build function.

## **14.3 Installation**

### **14.3.1 AutoUpdate**

#### *Installation directory*

Uses the name of the primary installation directory when creating installation directory for AutoUpdate.

#### *Trusted Locations.*

File Server location is now added to Trusted Locations.

#### *Command Line Arguments*

Any Command Line Arguments will be passed along to newer version.

#### *elMasterDesign AutoCAD Profile*

The AutoCAD profile used by elMasterDesign is updated with the correct Support File Paths and Trusted Locations.

## **15 Release Fix 1 (12.2.1)**

### **15.1 Explorer**

#### *Automatic Allocation (Case 29122)*

An issue where the spare parts setting for cables was ignored has been resolved.

#### *Common Item Designations*

A number of changes has been made throughout the product involving Common Item Designations.

- A new Common Designation menu item has been added to the document context menu, under Relations->Objects.
- It is now possible to edit the Common Item Designations in the Document List, either by using the built-in lookup dialog or by simply writing the designation in the grid. These columns are only shown if the DOC\_COMMONDES\_SHOW variable is set to TRUE.

- It is now possible to edit the Common Item Designations in the Import Document dialog, either by using the built-in lookup dialog or by simply writing the designation in the grid. These columns are only shown if the DOC\_COMMONDES\_SHOW variable is set to TRUE.

### *Document Data Tab/Dialog*

A couple of changes has been made to the Document Data tab and the corresponding dialog.

- If a document isn't using sheets according to the specified Document Type, the sheet number and alternative sheet number fields will not be shown.
- A button for running AutoDoc has been added to the data tab for documents.

### *Number Sequences*

It is now possible to define a field to which a sequence is connected in the AutoDoc dialog. The data in this field will be used as a filter value for the sequence, meaning that you can have multiple instances of the same sequence depending on the filter.

Example)

Specify using sequence SEQ1 as for example Document Number connected to the Type Code:

<SEQUENCE:SEQ1[TYPE\_CODE]>

This would result in one sequence running for each Type Code used.

### *PDF Previews*

There is now an Update menu item added to the PDF menu on documents. Using this will update the Preview PDF on the selected documents using the internal PDF Generator plugin.

## **15.2 Design**

### *Removing upper designations (Case 30042)*

An issue where you weren't allowed to remove an upper designation from an object in Design has been resolved. This issue only occurred when the CODES\_REC\_CREATE variable was set to FALSE.

## **16 Release Fix 2 (12.2.2)**

### **16.1 Explorer**

#### *Document Start*

- Instead of falling back to the built-in script if the selected script doesn't exist the start operation is now aborted.
- It's now possible to set AutoCAD version in the *Switches* field. Ex, /acadver 2016. This switch applies to all AutoCAD based applications. It's also possible to pass this switch to elMasterDesign.exe directly, e.g. in the target field of an elMasterDesign shortcut.

### *Handling of password protected PDFs (Case 30865)*

An issue where you couldn't check in password protected PDF files has been resolved. However since the file is encrypted and protected it cannot be parsed for the content search functionality.

### *Data Tab Terminals (Case 31202)*

An issue where only terminals existing in drawings were displayed correctly has been resolved.

### *Copy Structure Collision handling (Case 30363)*

An issue where you couldn't change the designation of a cable after a detected collision in Copy Structure has been resolved.

### *Tree updates causing to many nodes to be displayed, or disappear after updates*

If object is added to a new structure, tree nodes would sometimes be duplicated.

Information objects would sometimes be duplicated or disappear after certain operating, e.g. deleting a parent would cause the child item nodes to disappear instead of reappearing without the deleted parent.

### *Plugins were executed multiple times if plugin role access where used by multiple roles*

This has been fixed in this version and plugins will only run once regardless of plugin role access configuration.

### *Subprojects are now displayed under "my projects"*

Active subprojects or subprojects that the user is a member of will now be displayed under the "my projects" folder.

## **16.2 Design**

### *Remove Common Item Designation from Explorer*

If a designation in common item designation fields is removed for a document (without deleting the object) the designation will also be removed from the common item designation symbol in the drawing when the drawing is updated.

### *Automatic designations in Layout drawings*

Automatic designation works now also for Free symbols. Grid construction lines can be turned on/off with the layer status construction lines.

### *Change terminal numbers*

All Terminal numbers can be changed for all symbols in the drawing with the same designation from the edit dialog.

### *Data symbols*

Data symbols can now display more fields with article data

## **17 Release Fix 3 (12.2.3)**

### **17.1 Explorer**

#### *Cable Articles*

An issue where you couldn't set an article directly when creating a new cable in the Cable Dialog has been resolved.

### **17.2 CAD-Driver**

#### *Common Designation*

Fixed issue where Common Designation was deleted when saving AutoCAD documents.

#### *Property Mapping*

Fixed issue where certain characters prevented AutoCAD block attributes to be updated.



## 18 Release Service Release 3

### *Project Document and Project Structure*

User can now have information objects and documentation under projects.

### *docMaster Mobile*

There is a new product, a web version of docMaster with limited functionality.

### *Demand Data for Documents*

## 19 Release Fix 1 (12.3.1)

### *CAD-Driver Ribbon loaded in all AutoCAD verticals*

### *Now Batch functions for AutoCAD files works*

### *Watermark fixed*

## 20 Release Fix 2 (12.3.2)

### *docMaster Mobile and Masterportal fixes*

- Tree does not jump to the top node
- Column Filter now works with space

## 21 Release Fix 3 (12.3.3)

### *CAD-Driver, AutoCAD*

- External References are now inserted with a relative path.
- Now updates both Model- and Paper Space Block Attributes.

### *Design, multiline designations*

It is now possible to have designations with line breaks. Select MC Mange/Attribute/Multiline and then select the attribute with a designation. Change the width of the attribute with the slider and add a space for line breaks.

### *Design, Vinkel vid insättning av text*

The insert text function asks for text angle when inserting texts. If you add multiple lines at the same time it will be converted to a mtext object with the alignment point at the bottom.

### *Cable routing, Cable Card Report (Case 31962)*

An issue where a report containing too many cables would crash has been resolved.

### *Project Depending Connection Reports (Case 32062)*

Changing the article on a Cable would not mark the parts as changed in the project depending connection report. This issue has been resolved.

### *Shared preview path without web root*

Support added for referencing preview files directly from a shared preview path, when hosting preview template files on an application server. Rather than having to reference them through http.

## **22 Release Fix 4 (12.3.4)**

### *Performance Issues*

We have resolved a performance issue where retrieving a large number of objects, i.e. in the free structure would be very slow.

### *Project Handling*

We have made a number of changes to the internal functions of the Project handling. For one we have added a closed flag to the projects to make it easier to exclude old projects when retrieving data. We have also changed how the lock checks are made, both in the Treebrowser in Master Explorer and behind the scenes. We are hoping that this will provide both better performance as well as better security.

## **23 Release Fix 5 (12.3.5)**

### *Autonumber (Case 34462)*

Fixed an issue where connections that should become Links could be allocated as Wires under certain circumstances.

### *Connection Reports (Case 33102)*

Fixed issues where project depending connection reports would give the wrong result when either changing the article of a cable, or when reconnecting an existing cable to new terminals.

### *ADG (Case 33682)*

- Fixed issue with Current Version Field showing incorrect file status.
- Fixed Publish Library crash.

### *CAD Driver*

- Added support for AutoCAD Electrical, AutoCAD Map 3D and AutoCAD Civil 3D.

- No longer checks out license on AutoCAD startup. License is checked out when a document residing in the database is opened or when activating a command from the CAD Driver ribbon tab.

#### *Document Start*

- “AnyAutoCAD” added as External Application. This will open documents in any AutoCAD Vertical available.
- Fixed an issue causing AutoCAD to display a dialog when opening read-only documents.

#### *Offline database connection in design (case 32064)*

Object data is not locked in drawings with database connection: offline.

#### *docMaster mobile editable grid*

It is now possible to edit data in the document grid of docMaster mobile and multiple ribbon commands has been extended to work with multiple row selections in the grid.

## **24 Release Fix 6 (12.3.6)**

#### *Treebrowser sorting (Case 35482)*

An issue where certain designations would be sorted incorrectly has been resolved.

#### *Object Lookup (Case 35064)*

An issue where the object lookup had performance issues under certain circumstances has been resolved.

#### *Object Workflow (Case 35606)*

It should now be possible to scrap objects that has children already in the scrap workflow machine.

#### *AD Synchronization for Users*

The AD sync has been updated so that the AD browser dialog now handles several domains. When the user selects an OU or group the next-coming level of groups are synchronized to be roles in MC. Groups under groups are not being synchronized to roles but can be used to easily create users.

## 25 Database Package Version

This is the version of the released database packages/functions and procedures.

Name	Version	Date
ELMPROJ_KILL_PROJECT	13	050309
ELMPROJ_RENAME_DOCS	09	980127
EPC_ALLOC	98	140220
EPC_ARTICLE_REFERENCE	02	060518
EPC_CONNECTION	29	110810
EPC_COPY	31	100423
EPC_COPY_CAB	03	010627
EPC_COPY_JOB	03	980527
EPC_DES	09	120831
EPC_DIFFLIST	34	090429
EPC_DM	14	131008
EPC_DOC	19	100218
EPC_EXCHANGE	19	091209
EPC_IO	33	120831
EPC_LANG	15	070829
EPC_LOCK	01	010315
EPC_MERGE	5	091123
EPC_NEW_COPY	67	140414
EPC_NEW_COPY_CAB	09	131211
EPC_NEW_COPY_JOB	014	140213
EPC_REP_COMMON	158	140410
EPC_REP_HYDRO	03	061002
EPC_REP_INT_CREATE	034	140219
EPC_REP_INT_DIFFLIST	010	140120
EPC_REP_INT_FORMAT	025	140219
EPC_REP_IO_CREATE	002	091015
EPC_REP_IO_DIFFLIST	004	110405
EPC_REP_IO_FORMAT	002	091015
EPC_REP_PROJ_CREATE	034	140227
EPC_REP_PROJ_DIFFLIST	010	140120
EPC_REP_PROJ_FORMAT	013	140131
EPC_REP_ROUTING_CREATE	004	130603
EPC_REP_ROUTING_DIFFLIST	002	110131
EPC_REP_ROUTING_FORMAT	003	111212

EPC_REP_SPC	06	091120
EPC_REP_TASK_CREATE	013	130517
EPC_REP_TASK_DIFFLIST	007	130517
EPC_REP_TASK_FORMAT	07	130517
EPC_SCRIPTS	05	091117
EPC_TASKREQUEST	39	140512
EPC_TIME	03	990910
EPC_USERVARS	01	041216
EPC_UTIL	04	080410
FORSA_SORT	03	970402
GENERATE_REPORT	15	110131
IDES_JAVA_UTILS	1	130627
IDOK_DESMAN	50	130115
IDOK_FORSA	04	021220
IDOK_FORSA	161	140512
IDOK_FORSA	162	140423
IDOK_FORSA	193	140108
IDOK_FORSA	147	131104
IDOK_FORSA	400	130415
IDOK_FORSA	37	130115
IDOK_GRNT	001	081013
IDOK_SY	001	091013
IDOK_USR	001	091013
ID_TABLE	02	060630
ID_TRAV	01	011018
PROJECT_CODES	03	990908
PROJECT_TABLE	04	090819

## 26 Known Limitations

### *Changes do not take effect immediately*

Not all changes made in the Administration dialogs will take effect immediately, so after changing something in the administration dialogs it is advisable to restart the MasterExplorer application to ensure that the changes will take effect.

### *Grid Limitations (32-bit only)*

When loading data into the grid the memory limitation in the product is around 1 GB. That means the document list can fetch approx. 120.000 rows and the Object List approx. 110.000 rows.

We will investigate this further to solve this limitation.

### ***Update cabledef symbols***

Update from database does not update cable codes if you have both codes and an article on the connection. The codes will not be updated until you save the drawing.

### ***Word and Excel Reports***

If you have both Word and Excel reports in a single project, avoid using the same filename (i.e. 1.DOC and 1.XLS), this may cause problems with the xml-file used for generating the data.

### ***Article Summary Reports***

Does not work for Word and Excel reports, the formatting of the summary are made in the crystal report.

### ***Preview of MS Office documents on a 64bit system***

To be able to dock an instance of Word or Excel in the preview tab this application must be 64bit when the MasterExplorer is running as a 64bit application. However, MS Office will by default install the 32bit version even on 64bit systems to improve backwards compatibility.

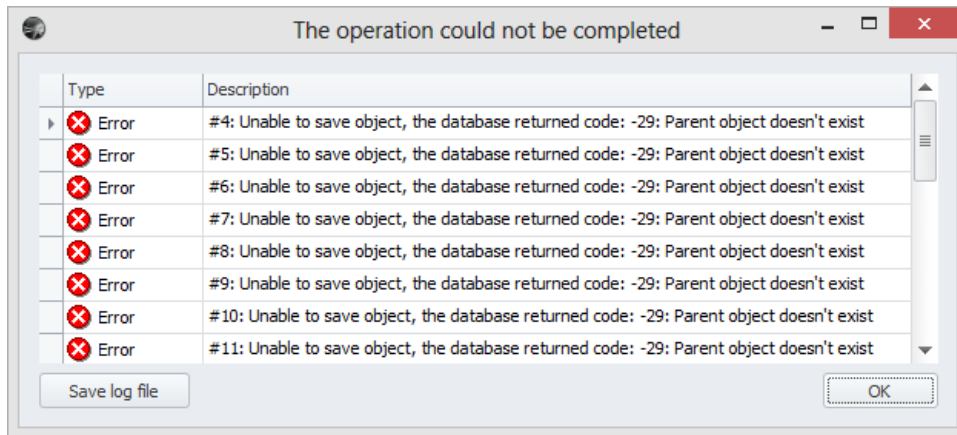
This means that provided we have a standard installation of Office and the Explorer on a 64bit system, it is not possible to display Office documents in the preview window. They will instead open in a separate Word or Excel application window.

### ***Briefcase files with more than 1000 documents may not be exportable when running windows XP***

When the briefcase to be exported contains records of around 1000 records, the export may fail without any export file being created. Try to split up the briefcase into several smaller briefcase files instead and export these instead.

### ***When imported objects are related to each other the object import may produce errors***

When objects are related to each other via object-object relations or structurally, the following messages may appear when importing. In order to solve the errors, please import the objects again until the messages no longer appear. Also, make sure that all objects can be imported (e.g. locked in another project) before importing.



You may also get errors complaining about a missing “CETLTER\_RETDOOB\_FK” relation. In order to solve this, import the documents and objects until everything is marked as imported. Then re-import the connections.

#### *Report Filer and Report Format in Briefcase*

The Briefcase function do not handle report filter and report format. The report data is also not included.